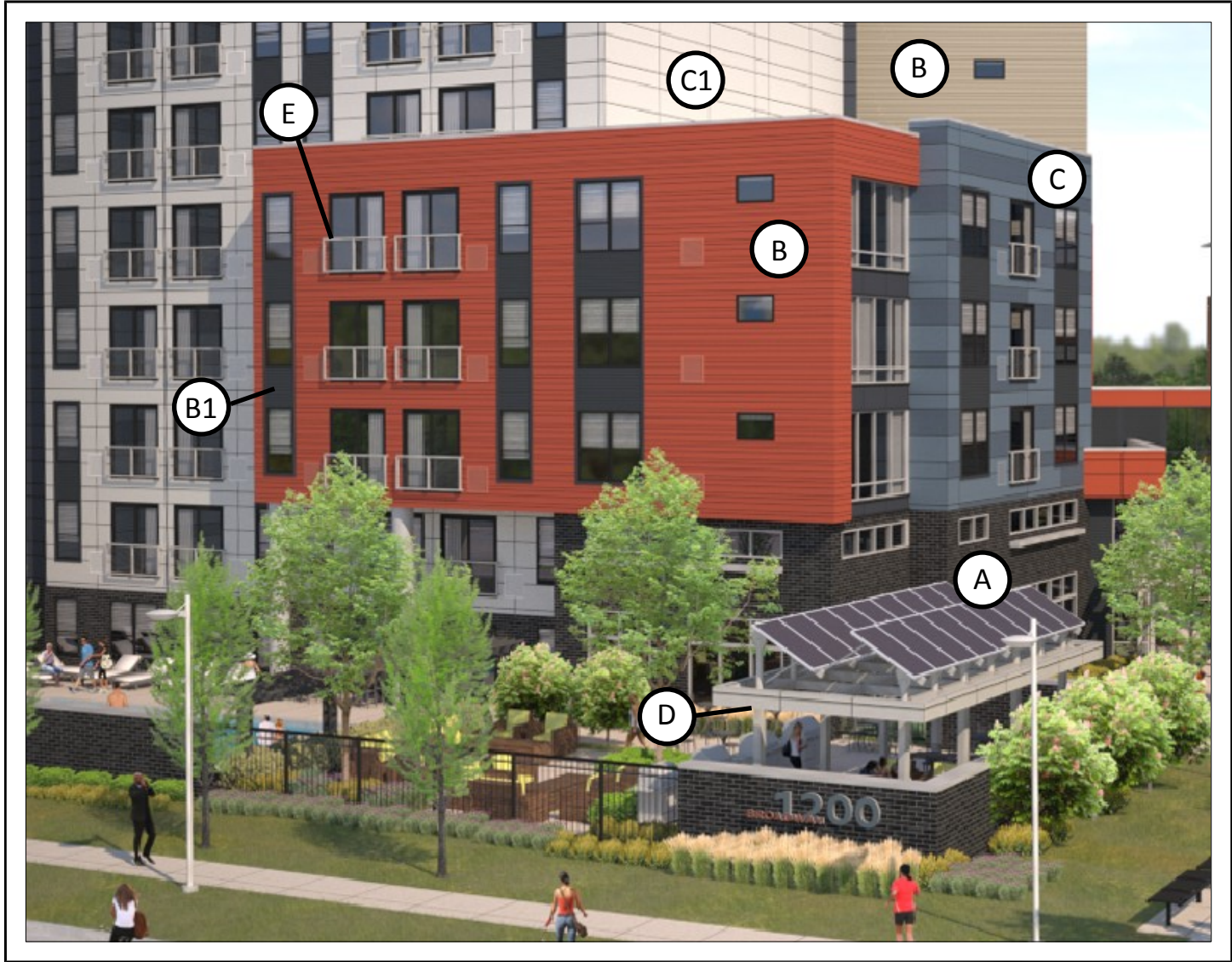


- A - Brick Veneer - 4"x4"x12"
- B - Lap Siding - Fiber Cement; 4"/6"/8" Varied Exposure, Color Varies
- B1 - Lap Siding - Fiber Cement ; 4" Exposure
- C - Vertical Wall Panel w/ Alum. Reveals - Fiber Cement; 18"/36" High x8'; Two-Colors
- C1 - Vertical Wall Panel w/ Alum. Reveals - Fiber Cement; 18"/36" High x8'; Color Varies
- D - ACM Panel Cladding - Rout & Return Joints
- E - Aluminum Railing - Stainless Steel Cable Infill



- A - Brick Veneer - 4"x4"x16"
- A1 - Brick Veneer - 4"x4"x16"; At Base
- B - Cast Stone - 8" Banding & 4" Sill/Cap
- C - Formed Metal Wall Panel - 2" Corrugation
- D - ACM Panel Cladding - Rout & Return Joints
- D1 - ACM Panel Cladding - Rout & Return Joints; Wall Panels
- E - Wood Grain Siding - Fiber Cement; 6" Exposure, 8' Boards
- F - Aluminum Balcony & Railings - Vertical Picket Infill

